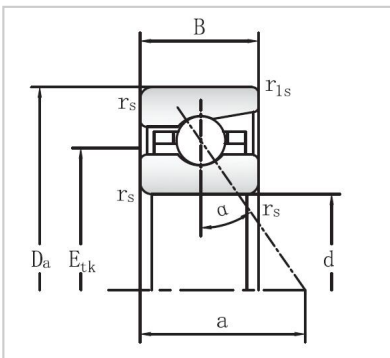


## Angular Contact Ball Bearings

### 719 Series Angular Contact Ball Bearings-71910



Bearing NO.	<b>71910</b>
Dimensions	
d mm	50
D mm	72
B mm	12
r <sub>s</sub> min	0.6
r <sub>1s</sub> min	0.6
Assemnly Dimensions	
da h12	55
Da H12	67.5
ra max	0.6
rb max	0.6
E <sub>tk</sub>	58.9
Loading	
C <sub>dyn</sub> kN	18
C <sub>0</sub> stat kN	15.6
RPM	
Grease min-1	16000
Oil minimal	26000
FV	
L (N)	118
M (N)	482
H	1059
KaE	
L	345
M	1458
H	3322
Sa	
L (N/μm)	103.1
M	175.1
H	242.3
Weight kg	0.13