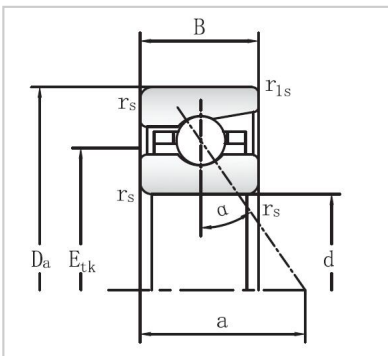


## Angular Contact Ball Bearings

### 719 Series Angular Contact Ball Bearings-71908



Bearing NO.	<b>71908</b>
Dimensions	
d mm	40
D mm	62
B mm	12
r <sub>s</sub> min	0.6
r <sub>1s</sub> min	0.6
Assemnly Dimensions	
da h12	45
Da H12	58.5
ra max	0.6
rb max	0.6
E <sub>tk</sub>	49.1
Loading	
C <sub>dyn</sub> kN	16.6
C <sub>0stat</sub> kN	13.2
RPM	
Grease min-1	20000
Oil minimal	34000
FV	
L (N)	112
M (N)	450
H	984
KaE	
L	328
M	1366
H	3101
Sa	
L (N/μm)	91.7
M	155.3
H	215
Weight kg	0.11