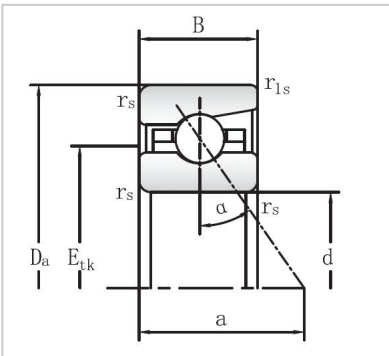


## Angular Contact Ball Bearings

### 718 Series Angular Contact Ball Bearings-71840



Bearing NO.	<b>71840</b>
Dimensions	
d mm	200
D mm	250
B mm	24
r <sub>s</sub> min	1.5
r <sub>1s</sub> min	0.6
Assemnly Dimensions	
da h12	211
Da H12	239
ra max	1.5
rb max	0.6
E <sub>tk</sub>	218.9
Loading	
C <sub>dyn</sub> kN	81.5
C <sub>0stat</sub> kN	114
RPM	
Grease min-1	4300
Oil minimal	6300
FV	
L (N)	355
M (N)	1317
H	2817
KaE	
L	1080
M	4320
H	9888
Sa	
L (N/μm)	134.9
M	239
H	348.9
Weight kg	2.3