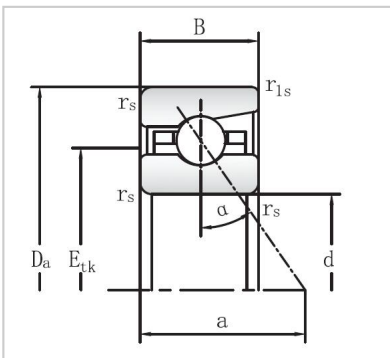


Angular Contact Ball Bearings

718 Series Angular Contact Ball Bearings-71815



Bearing NO.	71815
Dimensions	
d mm	75
D mm	95
B mm	10
r _s min	0.6
r _{1s} min	0.3
Assemnly Dimensions	
da h12	79
Da H12	90.5
ra max	0.6
rb max	0.3
E _{tk}	82.3
Loading	
C _{dyn} kN	14.3
C _{0stat} kN	15.6
RPM	
Grease min-1	13000
Oil minimal	20000
FV	
L (N)	53
M (N)	213
H	467
KaE	
L	159
M	695
H	1638
Sa	
L (N/μm)	47.7
M	87.8
H	130.1
Weight kg	0.14