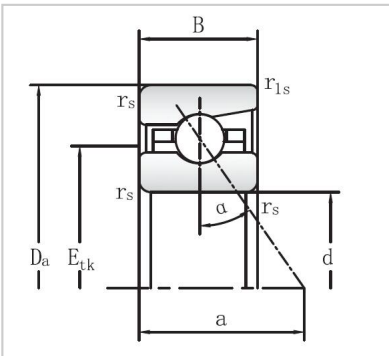


## Angular Contact Ball Bearings

### 718 Series Angular Contact Ball Bearings-71809



Bearing NO.	<b>71809</b>
Dimensions	
d mm	45
D mm	58
B mm	<b>7</b>
r <sub>s</sub> min	0.3
r <sub>1s</sub> min	0.1
Assemnly Dimensions	
da h12	48
Da H12	55.5
ra max	0.3
rb max	0.1
E <sub>tk</sub>	49.6
Loading	
C <sub>dyn</sub> kN	7.2
C <sub>0</sub> stat kN	6.95
RPM	
Grease min-1	22000
Oil minimal	36000
FV	
L (N)	22
M (N)	98
H	221
KaE	
L	66
M	318
H	774
Sa	
L (N/μm)	28.2
M	53.6
H	80.7
Weight kg	0.04