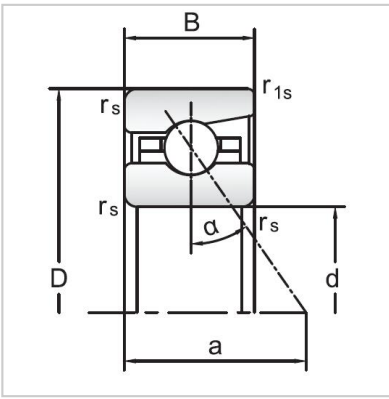
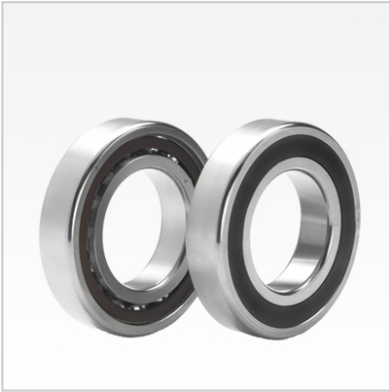


## Angular Contact Ball Bearings

### 70 Series Angular Contact Ball Bearings-7040C



Bearing NO.	<b>7040C</b>
Dimensions(mm)	
d	200
D	310
B	51
ramin	2.1
r1min	1.1
Mounting dimensions	
da min	220
Da/Db max	290
ra max	2.1
rb max	1.1
Loading kN	
Cr	289.1
Cor	471.4
Limited Speed r/min	
Lub.	3800
Oil.	5600
Prelaoding N	
A(L)	1600
B(M)	4800
C(H)	9600
Axial rigidityRa N/μm	
A(L)	186
B(M)	270
C(H)	342
Weight Kg ≈	12.1