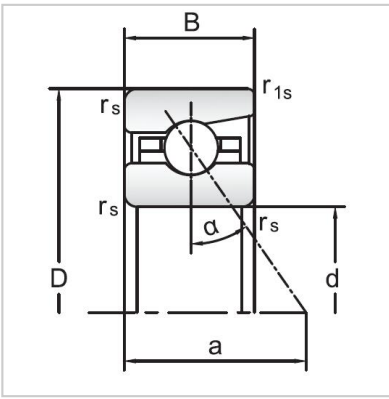
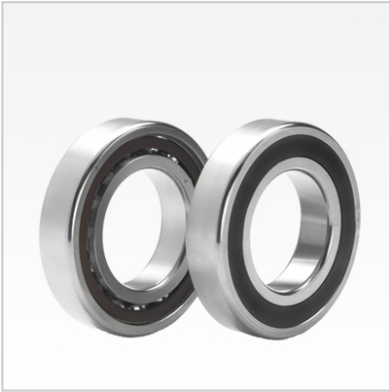


## Angular Contact Ball Bearings

### 70 Series Angular Contact Ball Bearings-7032AC



Bearing NO.	<b>7032AC</b>
Dimensions(mm)	
d	160
D	240
B	38
ramin	2.1
r1min	1.1
Mounting dimensions	
da min	174.5
Da/Db max	225.5
ra max	2.1
rb max	1.1
Loading kN	
Cr	178.6
Cor	251
Limited Speed r/min	
Lub.	4800
Oil.	7000
Prelaoding N	
A(L)	1600
B(M)	4800
C(H)	9600
Axial rigidityRa N/μm	
A(L)	4077
B(M)	572
C(H)	719
Weight Kg ≈	5.07