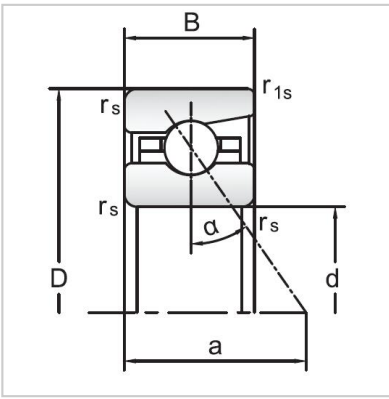
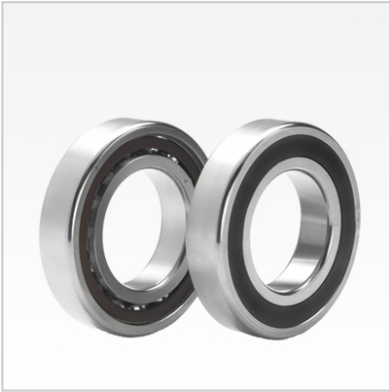


Angular Contact Ball Bearings

70 Series Angular Contact Ball Bearings-7028C



Bearing NO.	7028C
Dimensions(mm)	
d	140
D	210
B	33
ramin	2
r1min	1
Mounting dimensions	
da min	152.5
Da/Db max	197.5
ra max	2
rb max	1
Loading kN	
Cr	148.7
Cor	202.6
Limited Speed r/min	
Lub.	6000
Oil.	9000
Prelaoding N	
A(L)	800
B(M)	2400
C(H)	4800
Axial rigidityRa N/μm	
A(L)	134
B(M)	194
C(H)	264
Weight Kg ≈	3.37