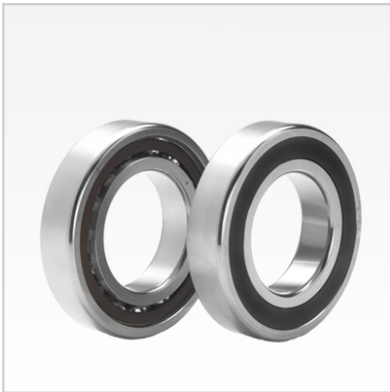


## Angular Contact Ball Bearings

### 70 Series Angular Contact Ball Bearings-7028AC



Bearing NO.	<b>7028AC</b>
Dimensions(mm)	
d	140
D	210
B	33
r <sub>amin</sub>	<b>2</b>
r <sub>lmin</sub>	1
Mounting dimensions	
da min	152.5
Da/Db max	197.5
ra max	<b>2</b>
rb max	1
Loading kN	
Cr	140.4
Cor	192.2
Limited Speed r/min	
Lub.	5600
Oil.	8500
Prelaoding N	
A(L)	1300
B(M)	3900
C(H)	7800
Axial rigidityRa N/μm	
A(L)	350
B(M)	505
C(H)	625
Weight Kg ≈	3.37