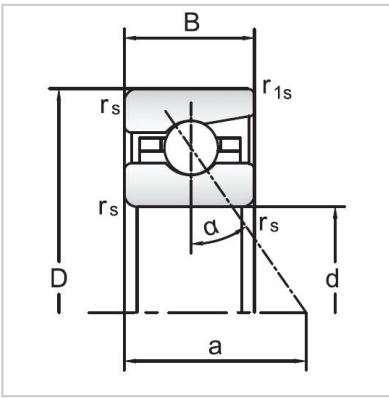
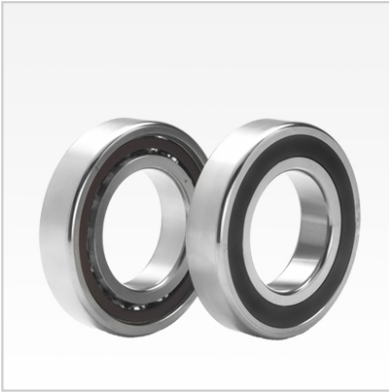


Angular Contact Ball Bearings

70 Series Angular Contact Ball Bearings-7022C



Bearing NO.	7022C
Dimensions(mm)	
d	110
D	170
B	28
r _{amin}	2
r _{lmin}	1
Mounting dimensions	
da min	121
Da/Db max	159
ra max	2
rb max	1
Loading kN	
Cr	110.4
Cor	139.8
Limited Speed r/min	
Lub.	7000
Oil.	11000
Prelaoding N	
A(L)	590
B(M)	1750
C(H)	3500
Axial rigidityRa N/μm	
A(L)	112
B(M)	162
C(H)	205
Weight Kg ≈	1.97