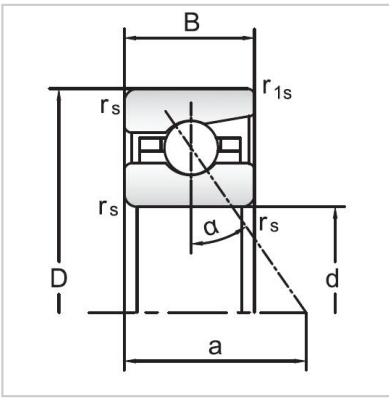
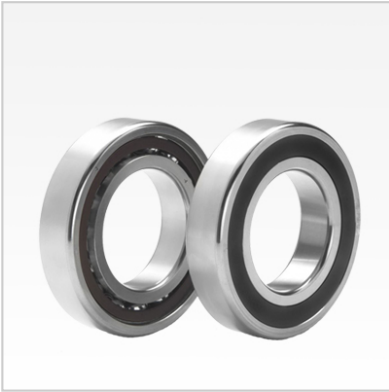


Angular Contact Ball Bearings

70 Series Angular Contact Ball Bearings-7018C



Bearing NO.	7018C
Dimensions(mm)	
d	90
D	140
B	24
r _{amin}	1.5
r _{lmin}	0.6
Mounting dimensions	
da min	100.5
Da/Db max	130
ra max	1.5
rb max	0.6
Loading kN	
Cr	66.9
Cor	84
Limited Speed r/min	
Lub.	9000
Oil.	15000
Prelaoding N	
A(L)	360
B(M)	1050
C(H)	2100
Axial rigidityRa N/μm	
A(L)	89
B(M)	129
C(H)	163
Weight Kg ≈	1.18