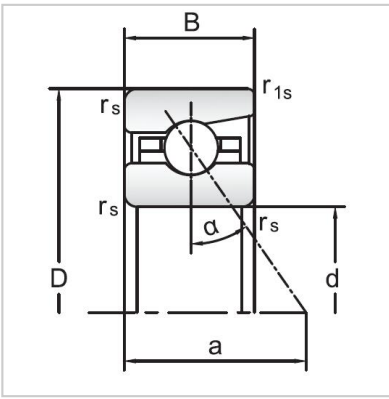
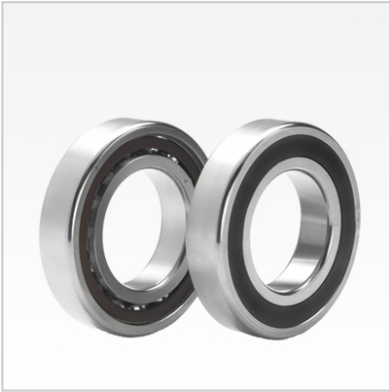


Angular Contact Ball Bearings

70 Series Angular Contact Ball Bearings-7012C



Bearing NO.	7012C
Dimensions(mm)	
d	60
D	95
B	18
ramin	1.1
r1min	0.6
Mounting dimensions	
da min	66.5
Da/Db max	88.5
ra max	1.1
rb max	0.6
Loading kN	
Cr	37.8
Cor	40
Limited Speed r/min	
Lub.	14000
Oil.	20000
Prelaoding N	
A(L)	500
B(M)	600
C(H)	1200
Axial rigidityRa N/μm	
A(L)	59
B(M)	85
C(H)	108
Weight Kg ≈	0.39