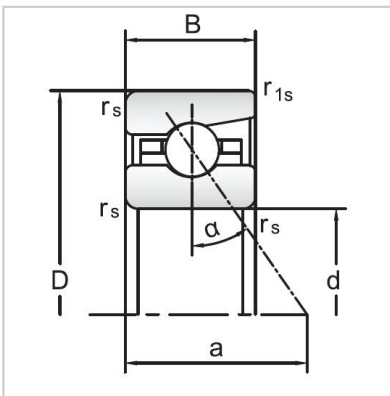
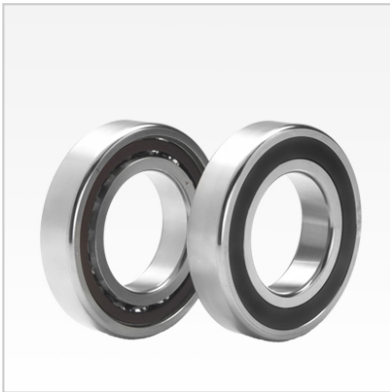


## Angular Contact Ball Bearings

### 70 Series Angular Contact Ball Bearings-7011C



Bearing NO.	<b>7011C</b>
Dimensions(mm)	
d	55
D	90
B	18
ramin	1.1
r1min	0.6
Mounting dimensions	
da min	61.5
Da/Db max	83.5
ra max	1.1
rb max	0.6
Loading kN	
Cr	36.7
Cor	37.1
Limited Speed r/min	
Lub.	14000
Oil.	22000
Prelaoding N	
A(L)	195
B(M)	580
C(H)	1160
Axial rigidityRa N/μm	
A(L)	56
B(M)	81
C(H)	103
Weight Kg ≈	0.37