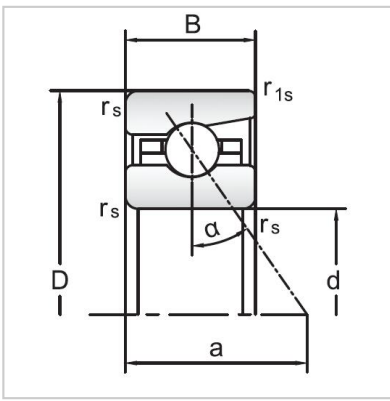
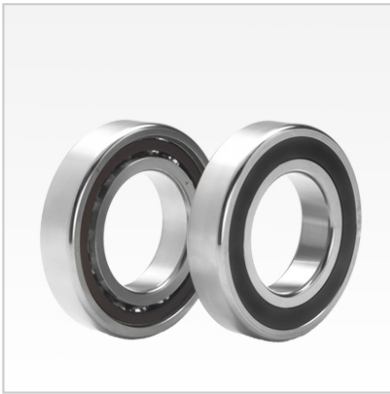


## Angular Contact Ball Bearings

### 70 Series Angular Contact Ball Bearings-7010AC



Bearing NO.	<b>7010AC</b>
Dimensions(mm)	
d	50
D	80
B	16
ramin	<b>1</b>
r1min	0.3
Mounting dimensions	
da min	55.5
Da/Db max	74.5
ra max	<b>1</b>
rb max	0.3
Loading kN	
Cr	26.2
Cor	26.2
Limited Speed r/min	
Lub.	15000
Oil.	24000
Prelaoding N	
A(L)	235
B(M)	700
C(H)	1400
Axial rigidityRa N/μm	
A(L)	130
B(M)	182
C(H)	229
Weight Kg ≈	0.25