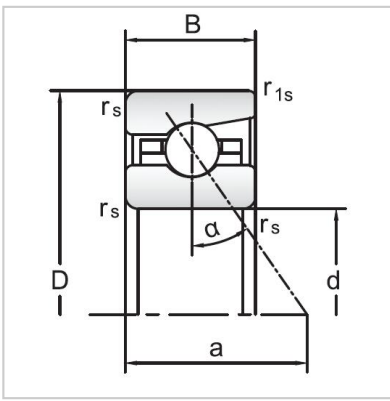
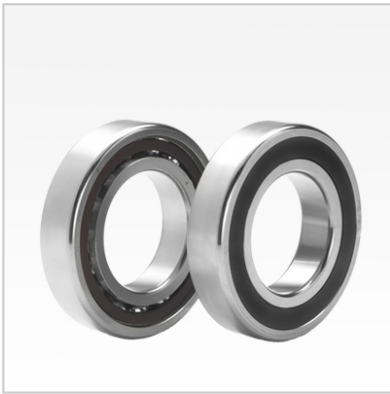


## Angular Contact Ball Bearings

### 70 Series Angular Contact Ball Bearings-7006AC



Bearing NO.	<b>7006AC</b>
Dimensions(mm)	
d	30
D	55
B	13
r <sub>amin</sub>	1
r <sub>lmin</sub>	0.3
Mounting dimensions	
da min	34.5
Da/Db max	50.5
ra max	1
rb max	0.3
Loading kN	
Cr	14.9
Cor	10.9
Limited Speed r/min	
Lub.	24000
Oil.	38000
Prelaoding N	
A(L)	130
B(M)	390
C(H)	780
Axial rigidityRa N/μm	
A(L)	92
B(M)	128
C(H)	161
Weight Kg ≈	0.11