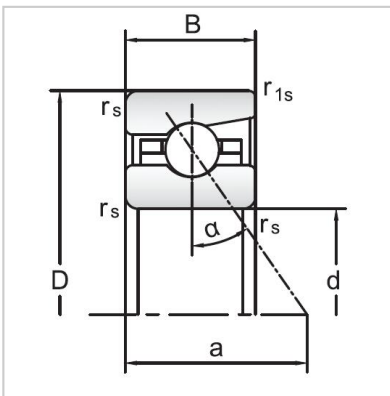
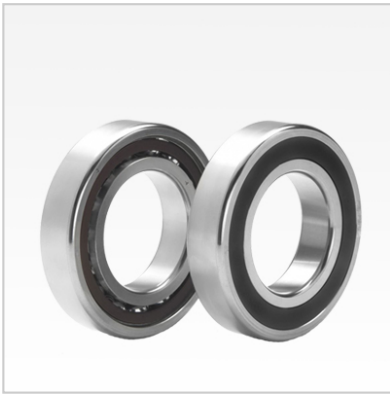


## Angular Contact Ball Bearings

### 70 Series Angular Contact Ball Bearings-7004C



Bearing NO.	<b>7004C</b>
Dimensions(mm)	
d	20
D	42
B	12
ramin	0.6
r1min	0.15
Mounting dimensions	
da min	24.5
Da/Db max	37.5
ra max	0.6
rb max	0.15
Loading kN	
Cr	9.6
Cor	6.3
Limited Speed r/min	
Lub.	38000
Oil.	56000
Prelaoding N	
A(L)	50
B(M)	150
C(H)	300
Axial rigidityRa N/μm	
A(L)	24
B(M)	35
C(H)	44
Weight Kg ≈	0.06